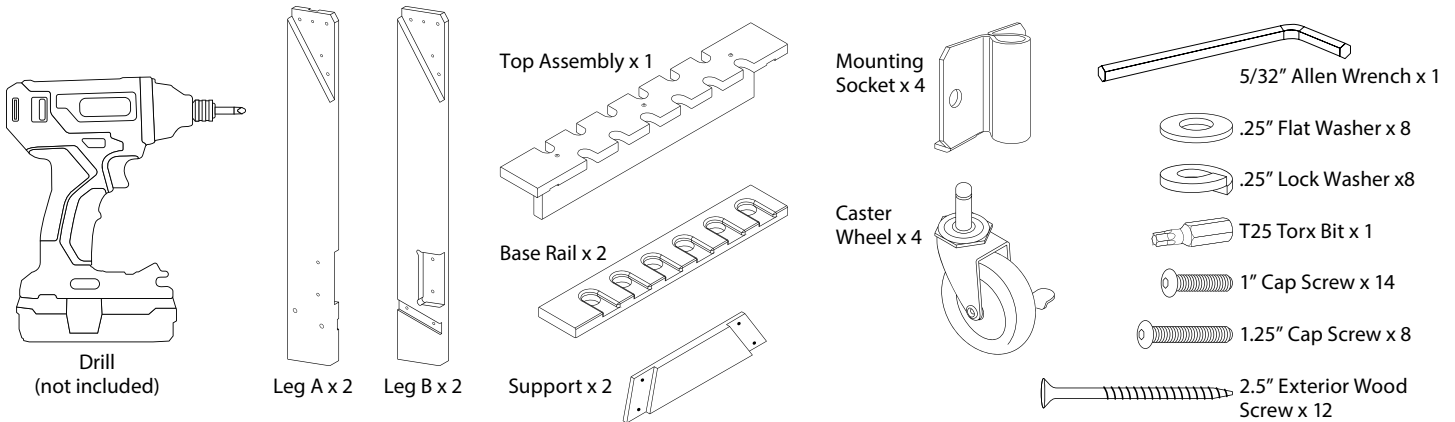


Double Sided Gun Rack with Wheels

Tools required: 5/32" allen wrench (included), drill (not included). One to two person assembly recommended.

PARTS

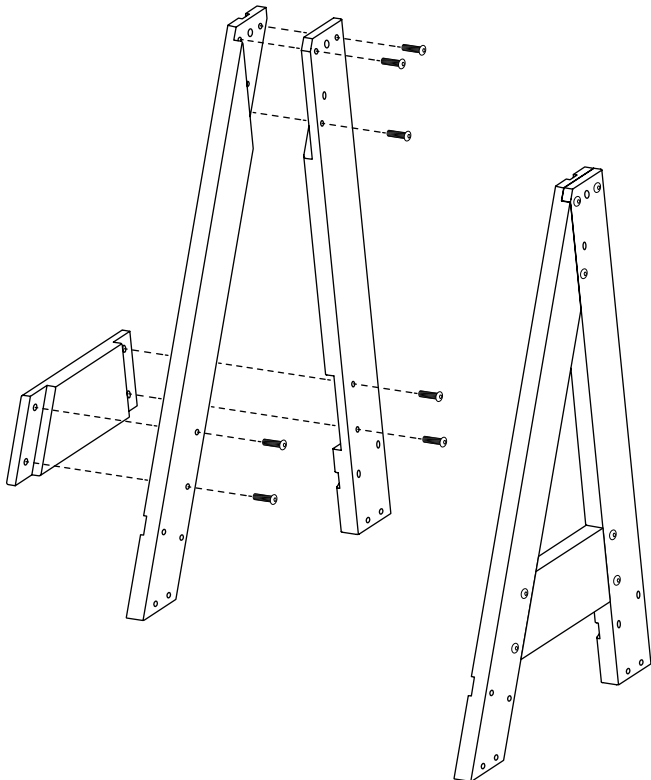


ASSEMBLY

STEP 1

Using allen wrench to fasten screws:

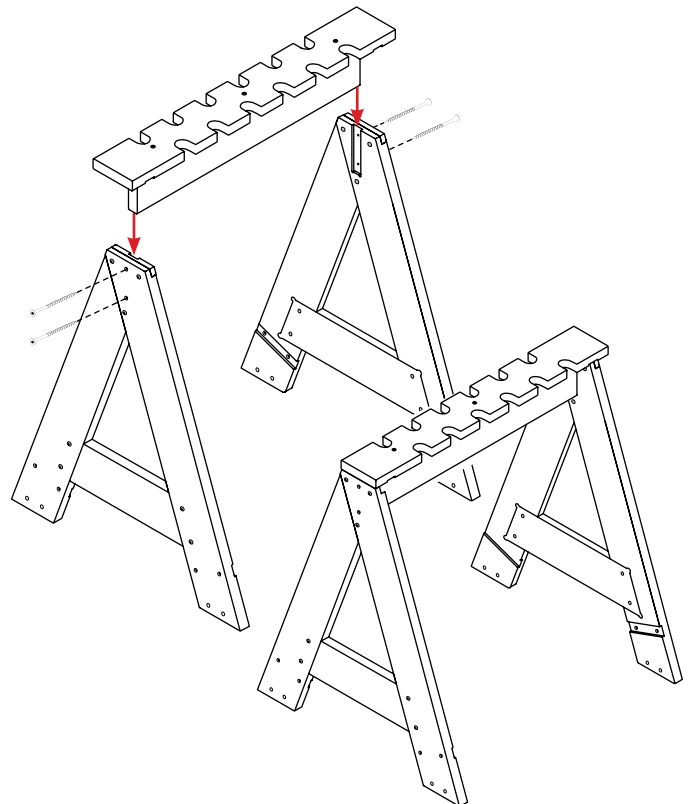
1. Assemble leg A to leg B using three 1" cap screws.
2. Attach support to legs using four 1" cap screws.
3. Repeat #1 & 2 using remaining legs, support, and 1" cap screws.



STEP 2

Using drill and T25 Torx bit:

1. Slide top assembly into grooves on leg assemblies.
2. Attach using four 2.5" wood screws. ***Do not over tighten wood screws. They can easily strip out.***

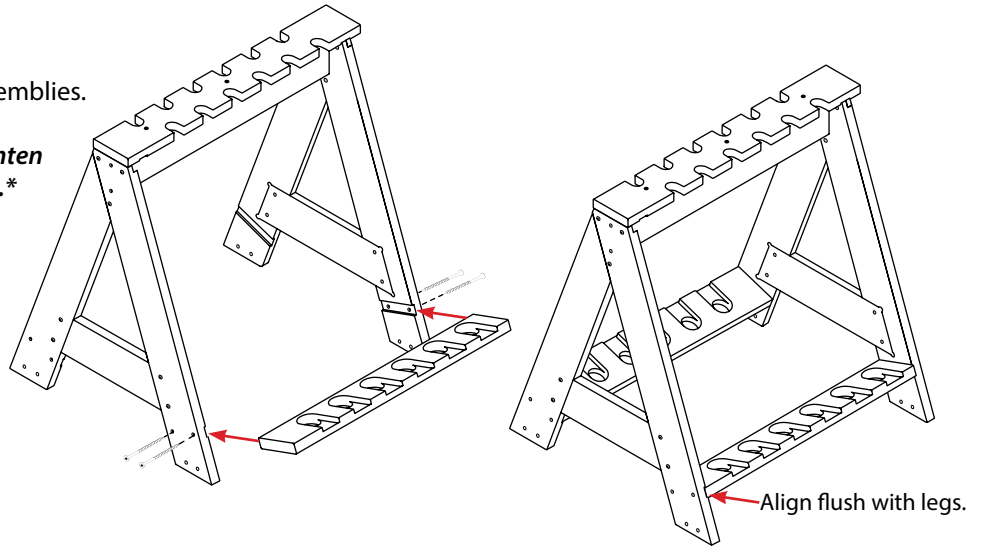


ASSEMBLY

STEP 3

Using drill and T25 Torx bit:

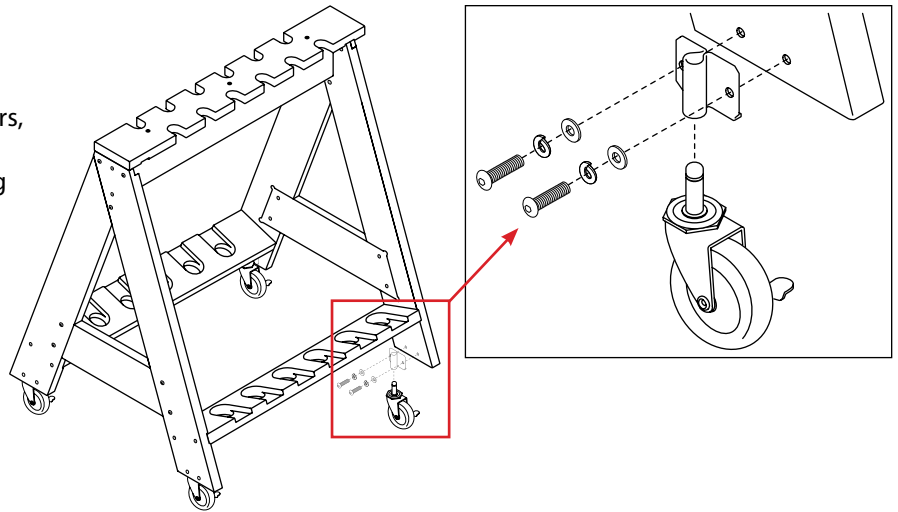
1. Slide base rail into grooves on leg assemblies.
2. Attach using four 2.5" wood screws.
Align flush with legs. ***Do not over tighten wood screws. They can easily strip out.***
3. Repeat for other side of rack.



STEP 4

Using allen wrench to fasten screws:

1. Attach mounting socket to inside leg using two 1.25" cap screws, two 0.25" lock washers, and two 0.25" flat washers.
2. Insert caster wheel and snap into mounting socket.
3. Repeat #1 & 2 on remaining legs.



Fully Assembled

